

Where The Poppies Grow Tall

Cb.

Music by GRAEME MURRAY

Lyrics by GRAEME MURRAY and MIKE STOBIE

Arranged and Orchestrated by MIKE STOBIE

A

Stately and expressive ♩ = 90
20

B

13

Musical staff for section A and B, showing a double bar line and a repeat sign.

34 **C**

mf

Musical staff for section C, measures 34-43, featuring a slur over four notes and dynamic markings.

44

D

Musical staff for section D, measures 44-53, featuring dynamic markings and a crescendo.

54

Musical staff for section E, measures 54-58, featuring a dynamic marking of *mf*.

59

E

Musical staff for section E, measures 59-62, featuring a dynamic change from *mp* to *mf*.

63

13

F

15

Musical staff for section F, showing a double bar line and a repeat sign.

91

G

Musical staff for section G, measures 91-100, featuring a slur over four notes and dynamic markings.

101

H

Musical staff for section H, measures 101-109, featuring dynamic markings and a crescendo.

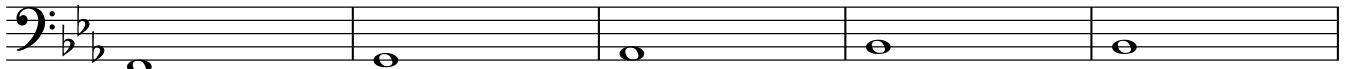
110

I

2

Musical staff for section I, measures 110-111, featuring dynamic markings of *f* and *mf*.

114

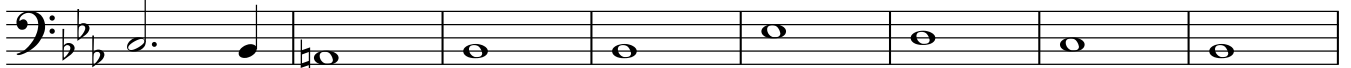


rall. . . a tempo

ff

rit..

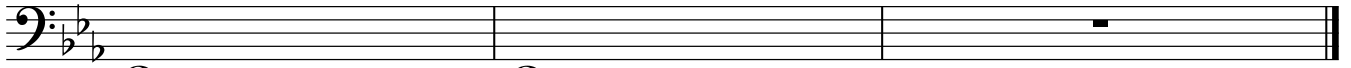
119



ff

127

a tempo



fff